

Taking the Drama out of Alarms...

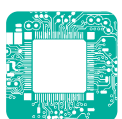
Avanti^{XP}

featuring Dialog Downloader Software



Making UDL accessible

- Super fast 6 second download (2400 baud)
- Easy on-site or remote programming
- Expandable to 24 zones
- Grade 2, Class II
- Multi format integrated digi modem
- LED, LCD and LCD prox RKP'S available
- **Red4Bed**, Grey4Away fobs
- Unique built-in help file
- Audible only version also available (*Avanti^{LC}*)



cascade
electronic systems limited

Avanti^{XP}

featuring **Dialog** Downloader Software



With the **Avanti^{XP}** and our new **Dialog**

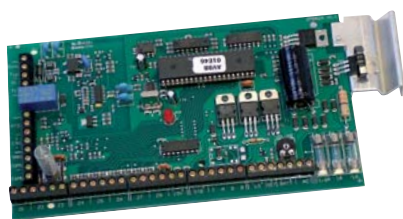
Downloader software you have the perfect working partnership - a cost conscious yet fully integrated system that delivers a blistering 6 second

download speed. Tried and trusted familiar

wiring makes for a fast, no fuss installation every time too.



Now you can remotely access any **Avanti^{XP}** system and do anything from iron out a simple glitch, change user access codes, omit a failed



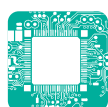
zone or programme the entire system all directly from your computer at the office or at home.



ORDER CODES

9EP320 **Avanti^{XP}** ES Polycarbonate
9EP321 **Avanti^{XP}** ES Steel
9EP322 **Avanti^{XP PLUS}** ES Steel
9EP340 **ZXP** 8 zone XPander (PCB)
9EP341 **ZXP** 8 zone XPander (Boxed)

9EP310 **Avanti** LED RKP
9EP311 **Avanti** LCD RKP
9EP312 **Avanti** LCD / Prox RKP
9EP314 **Red4Bed** Fob
9EP308 **Avanti^{LC}** ES Polycarbonate
9EP309 **Avanti^{LC}** ES Steel



cascade
electronic systems limited

17 Sefton Business Park, Aintree, Liverpool, Merseyside L30 1RD

Tel: +44 (0) 151 524 2202 Fax: +44 (0) 151 524 2320

website: www.cascadesecurity.co.uk e-mail: sales@cascadesecurity.co.uk

cascade is a trade mark of cascade electronic systems limited

SPECIFICATIONS

8 - 24 ZONES

All fully programmable + tamper.

6 types including Security, Fire, Tamper, Audible PA, Silent PA and doorbell

Attributes N/O, Double knock, permit omit, chime

REMOTE KEYPAD

Upto 4 backlit remote keypads

LCD RKP's with built-in help file

TAMPER

Normally closed or fully supervised using EOLR

PROGRAMS

3 part set programs with independent Entry/Exit times

ACCESS CODES

Engineer-Manager-Duress-Holiday-10 User-Latchkey codes

RE-SET

Programmable anti-code, engineer or remote reset facility

PTS INPUT

Dedicated push to set/keyswitch input

ALARM/EVENT LOG

256 Event Log: time and date stamped

OUTPUTS

Bell (TADB), Strobe, Sounder(Hi/Lo), Set+CHIME

All zones can be programmed for chime

COMMUNICATOR

Integrated digi-modem BSIA fast format, Contact ID, SIA, 3 account codes.

Confirmed alarm reporting to DD243/2004

UDL

Remote upload/download via Dialog downloader PC software

3 ringback phone numbers

2400 baud (upload 3 secs, download 6 secs)

RECHARGEABLE BATTERY

2.1 Ah polycarbonate endstation,

7 Ah steel endstation

DIMENSIONS

CPU polycarbonate: 235 x 180 x 58mm

CPU steel: 245 x 245 x 80mm

RKP: 132 x 95 x 29mm

STANDARDS

Low voltage directive LVD 72/23/EEC

DD243: 2004 compliant

TBR21 Telecommunications certification

EN 50131/PD6662

Avanti^{XP} Grade 2, Class II

Avanti^{LC} Grade 2X, Class II



Due to continuous product development, cascade without prior notice, reserve the right to alter specifications as and when required.

L150708